

**SUBDIVISION PLAN OF PART OF LOT A, DISTRICT LOT 110,  
KOOTENAY DISTRICT, PLAN NEP87168, EXCEPT PLAN NEP87169**

PLAN EPP52598

Pursuant to Section 67 of the Land Title Act  
BCGS 82J.011



All distances are in metres and decimals thereof.

The intended plot size of this plan is 560mm in width by 432mm in height (C size) when plotted at a scale of 1:500.

Grid bearings are derived from differential GNSS observations to (GCM #274118) and are referred to the central meridian of UTM Zone 11.

NAD83 (CSRS) 4.0.0.BC.1.

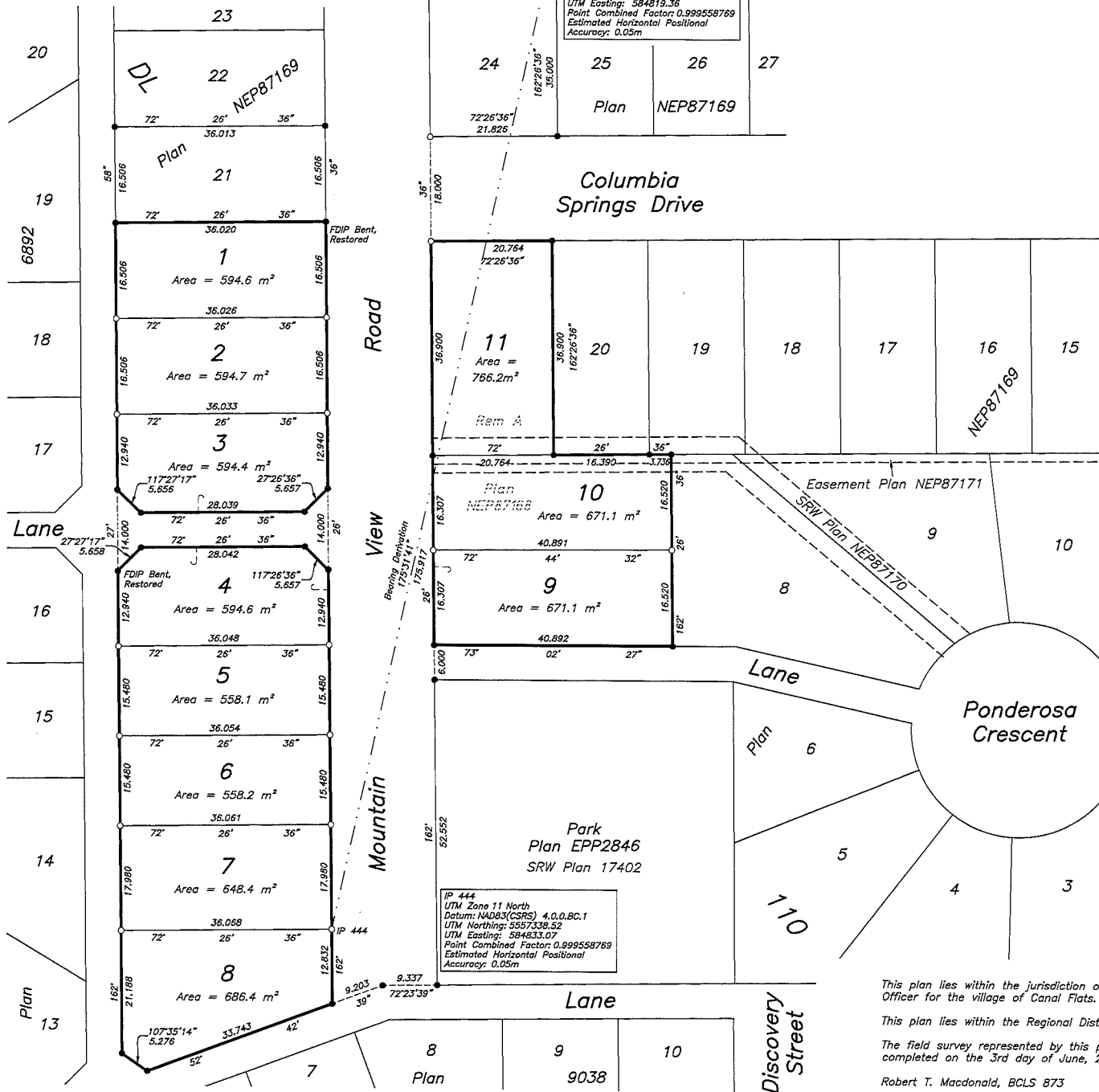
To obtain local astronomic bearings referred to the meridian through IP #444, add the convergence angle of 0°54'43".

The UTM coordinates and estimated horizontal positional accuracy achieved are derived from differential GNSS observations to (GCM #274118).

This plan shows horizontal ground-level distances, unless otherwise specified. To compute grid distances, multiply ground-level distances by the average combined factor of 0.999558769. The average combined factor has been determined based on an ellipsoidal elevation of 843 metres. CGVD28 (HTV2.0)

**LEGEND**

- denotes standard iron post found
- denotes standard iron post placed



IP 444  
UTM Zone 11 North  
Datum: NAD83(CSRS) 4.0.0.BC.1  
UTM Northing: 5557338.52  
UTM Easting: 584833.07  
Point Combined Factor: 0.999558769  
Estimated Horizontal Positional Accuracy: 0.05m

FDIP 242  
UTM Zone 11 North  
Datum: NAD83(CSRS) 4.0.0.BC.1  
UTM Northing: 5557513.81  
UTM Easting: 584819.36  
Point Combined Factor: 0.999558769  
Estimated Horizontal Positional Accuracy: 0.05m

This plan lies within the jurisdiction of the Approving Officer for the Village of Canal Flats.

This plan lies within the Regional District of East Kootenay

The field survey represented by this plan was completed on the 3rd day of June, 2015.

Robert T. Macdonald, BCLS 873

2015/06/17 - 09:58 \\s\p\wsp\bc\survey\2015\10053430-sb01-r00.dwg



WSP Surveys (BC) Limited Partnership  
303-535 Victoria Ave N, Cranbrook BC

PROJECT REF./DRAWING No.  
010053430-SB01-R00